

vital signs

May/June 1991, Volume 3, Issue 3

Roller Coasters & Cotton Candy!

Employees meet at Carowinds

Everyone loves a fair. All the fun, food, rides, and shows. But Carowinds is not just a fair. It is an 83-acre world-class theme park built on the North Carolina/South Carolina border. It was also the location of Southeastern's Annual "Family Day" Outing.

On April 20, 1991, a group of 200 made up of employees and their families met at Carowinds for a day full of laughter, fun, and food.

Not a cloud in the sky

The forecast had called for cool air & rain. Therefore, some employees came dressed in the SEHS sweatshirts they had ordered from **Phyllis Page** (SunBelt coordinator). But, only sunshine fell from the sky on this April day.

Minutes after arrival, **Donna Vinson**, husband David, and brother Brian, braved the morning air to ride ThunderRoad, Carowinds longest and tallest roller coaster. What they didn't consider was

the 50-mph speed they would be traveling. Upon exiting, their red noses and cold hands told the story of how cold it was. Nonetheless, they didn't waste time getting back in line to ride again!

Picnic Lunch

As lunch time approached, the Southeastern crowd began forming outside the Crossroads Pavilion. Once the gate opened, it was a race to the food. Carowinds staff had everything ready for us.

Willie Carroll brought her three grandchildren along on what she says was a "frantic" day. More than 50 children came with employees to enjoy Carowinds.

After everyone finished eating lunch,

Ray Jr. presented some employees with awards. The annual service awards were given out as was the first Southeastern Employee of the Year (See pages 2-3 for names of employees honored).

The whole day can easily be summed up in a few words...Fun for the whole family!

Written by

Pam Greenhill



Photo by Debbie Allee

Above: Linda Faircloth gets a surprise hug from Scooby-Doo during the afternoon picnic at Carowinds.

Below: Ray Burriss was one of many that received awards. Ray Jr. presents him with a check and plaque for his 10 years with SEHS.



Photo by Debbie Allee

We, the Fayetteville employees, wish to extend our sincere appreciation to SEHS management for organizing our trip to Carowinds.

Thank you so much for giving us the opportunity to have such fun with our friends and family. The employees of the SEHS Fayetteville office

Contents...

SEHS Veterans	2
Employees of the Month ..	2
Awards Given	2
Employee of the Year	3
Spotlights on:	
Clintec	3
Life Net	3
George Washington	6
Len Care	6
Photos from Carowinds	4
SunBelt Fashion Show	5
Pinehurst '91	5
Hosp. Customer Service	7
Service Anniversaries	7
New Arrivals	8
Hidden Heroes in "99"	8
Weddings	8
Birthdays	8



Employee of the Month

APRIL 1991

Congratulations to **Betty Koonce** for being selected Southeastern's employee of the month for April 1991!

Betty started at Southeastern in January of 1986 in the Accounts Receivable Department. Currently, she still works in this department.

Betty is a dependable, hard-working employee. She is always punctual and very friendly. Her co-workers describe her as "a joy to work with".

You will rarely see Betty without a smile on her face. She faces the day

Betty Koonce



Photo by Donna Viscum

with positive thoughts and rarely gets discouraged.

Her duties consist of handling all the payments from SEHS customers and maintaining the AR cash box. She handles both of these important jobs in a very proficient manner.

Congratulations again Betty! Accounts Receivable and Southeastern wouldn't be the same without you!

Written by Pam Greenhill

MAY 1991

Congratulations to **Russell Carr** for being selected as Southeastern's employee of the month for May 1991!

Russell came to the Richmond SEHS location in October of 1988. He works in the shipping department of Richmond's warehouse. Russell is responsible for pulling most of the orders that are shipped via common carrier.

Russell is always willing to help anyone when needed. He volunteers his hands and his knowledge to all his co-workers. Russell is often found still working on an order after everyone else has left for the day!

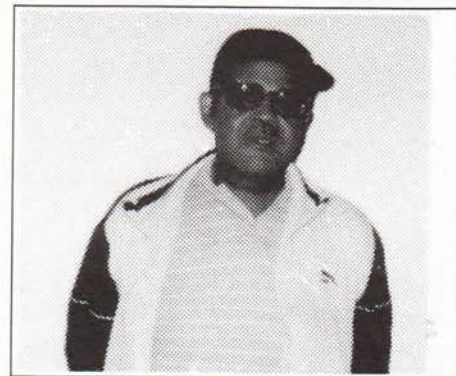


Photo by Jerry Rodriguez

Russell Carr

Richmond Office Manager, **Mike Henry**, says Russell never has a "that's not my job" attitude. He is a hard-worker and has a friendly hello for everyone he sees during the day.

Congratulations Russell! Southeastern is thankful for all you do!

Written by Pam Greenhill

Saving \$\$\$- A travel tip

Car rentals...

We are probably all aware that when renting an automobile, you should always fill-up the gas tank before returning it. A look at some real figures will demonstrate why.

On a recent business trip, it took 7.1 gallons of gasoline (at \$1.08 per gallon) to fill-up the tank. A total cost to me of \$7.60.

When reading the fine print on the rental agreement, I discovered the rental agency would have assessed a "refueling charge" had I returned the vehicle with an empty tank. However, they charge \$2.45 per gallon (does not represent the actual cost for gasoline, the explanation says) for a total of \$17.40.

Comparing the two totals, I realized I had saved \$9.80. Proving once again, it pays to read the fine print!

Submitted by Les Herod

Congratulations Glen!

I wanted to pass along some news to you and everyone at Southeastern.

Attending a recent meeting of the American Production and Inventory Control Society (APICS), I was present to see **Glen Carter**, your Warehouse operations manager, be elected to the post of Vice-President of Finance. Congrats Glen!

-copied from a letter received from Kelly Services Sr. Supervisor, Wendy Sledd

Southeastern Veterans

A personal look at SEHS employees with ten or more years of service. Names are chosen at random.

Sarah Bryan- 13-year veteran

Sarah Bryan has lived in Fayetteville for 20 years. She and husband, Mike, recently celebrated their 10-year wedding anniversary. They spend much of their time with their 6-year old daughter, Kali. She recently started learning how to ride horses.

Sarah says, "I enjoy relaxing outdoors, especially when laying out by a pool."

Janice Nettles- 18-year veteran

Janice Nettles has lived in Salemburg, NC all her life. She and husband, Sammy, enjoy being active in their church where Janice sings in the choir. She also enjoys playing tennis, reading, and working in her flower garden.

Janice received an addition to the family on her last birthday. Her family gave her a dachshund puppy, which she named Penny. The "newest Nettles" has brought tons of laughter and smiles to both Janice and Sammy. *-editor*

Service Awards



At each annual picnic, Southeastern gives awards to their employees who have reached milestone service years (5, 10, 15, etc.). Employees receive cash (amount depends on # of years with SEHS) and a plaque.

This year's awards were given at the Southeastern Family Day Outing held at Carowinds on April 20, 1991. The recipients and their years of service are as follows:

Debbie Allee	5 yrs.
Bill Bateman	5 yrs.
Jane Fort	5 yrs.
Krys Furniss	5 yrs.
Larry Page	5 yrs.
Ray Burris	10 yrs.
Earl Smith	10 yrs.

The 5-year employees received plaques and checks for \$25.00. The 10-year employees received plaques and checks for \$100.00. *-editor*

Clintec

Clintec Nutrition Company was formed a few years ago as a joint venture between Baxter Healthcare and Nestle S.A. The original intent was for the Clintec sales force to market Carnation's (A Division of Nestle) full line of enteral feeding products and Baxter's full line of parenteral feeding products. However, it was determined in late 1989 that more emphasis needed to be given to the enteral line of products, thus the Clintec enteral division was formed.

Today, Clintec is a relatively small player in the enteral market. However, both consumer and clinical confidence in the Carnation name, along with the quality of our products, are rapidly producing broad market acceptance. In fact, more and more dietitians and nurses are referring to them as the ONLY enteral products "with the taste that patients like." The primary reason for this response is due to the fact that Clintec products are formulated

Article written by Bob Fain, Region Manager of Clintec Nutrition Company

around patient taste, not the taste of well individuals. Therefore, with the quality and taste of the current line of products, coupled with some very exciting and innovative new products, soon to be released, the Clintec line will soon become the enteral product of choice among both consumers and clinicians.

Clintec is very pleased with the relationship recently established with Southeastern Hospital Supply. This is the first distributor relationship to be established by Clintec, therefore, Southeastern is the "yardstick" by which all other distributor relationships will be measured. However, it must be noted, "the example you're setting is going to be extremely difficult for any other distributor to match." Therefore, we at Clintec are looking forward, with great anticipation, to a long and productive association with a quality organization like Southeastern.

LifeNet Transplant Services

LifeNet Transplant Services is a young, growing business in Virginia Beach that chose SEHS as one of its major suppliers in the Spring of 1989. The company was formed in 1982 to meet the need of the medical community for a local organ and tissue recovery program.

Initially serving only the Eastern VA area, it now serves all of VA and parts of NC and is a nationally recognized supplier of quality transplant and tissue products. In fact, LifeNet is one of the largest tissue banks in the United States.

LifeNet is headquartered in VA Beach, with offices in Richmond, Washington, D.C., Pittsburgh, and Durham. LifeNet provides public and professional education programs and special events to raise awareness of donations throughout the forty hospitals it serves and the 2.5 million people in its service area.

LifeNet's tissue banking services perform three main tasks: the recovery of donated tissues from regional hospitals by tissue recovery teams; the processing of donated tissues for donations to LifeNet and other contractual agreements throughout the USA; and the distribution of tissue for clinical use to hospitals in VA, eastern NC and the surrounding areas.

As mentioned before, SEHS has been

serving LifeNet for two years. **Betty Rouse** initially worked with Pat Thompson, Supervisor of Support Services, compiling a product usage list and pricing. Shortly thereafter, **Bruce McKenna** became the alternate care sales representative for the VA Beach/Norfolk area and took over the account. Since then, Bruce has worked closely with Pat and Carla Stevenson, Materials Management Coordinator. Pat and Carla have computerized the list of products that SEHS supplies to them. Thereby, keeping the prices and inventory levels current, and putting as many items as possible on standing orders. LifeNet's volume of business has forced Pat to closely monitor his inventory and communicate frequently with Bruce and his customer servicereps, **Carolyn Williams** and **Debbie Rudisill**. Pat has stated many times that he is appreciative of SEHS's on-time deliveries and competitive prices!

Although the past two years have been a challenge for LifeNet and SEHS, both have benefited from the business relationship they have established. SEHS looks forward to helping LifeNet meet their future medical supply needs.

Special thanks to Bruce McKenna and LifeNet in helping to write this article -editor

Way to go, Marcia!

Congratulations to **Marcia Tarrant** for being chosen as Southeastern Hospital Supply's First Employee of the Year!!!

Marcia has worked in the Fayetteville office for nearly 5 years. She maintains all the incoming and outgoing mail, correspondence, memos, and much more. Some of her main duties include: sending daily packages out to all SEHS sales reps, maintenance of the fax machine and copier, and running all outgoing mail through the Pitney-Bowes postage machine.

Everyone at Southeastern truly enjoys working with Marcia. She is always help-



Photo by Donna Vinson

*Employee of the Year 1990
Marcia Tarrant*

ful and friendly. It seems no matter how hectic things may get, Marcia is always there with her warm smile and sincere greetings.

When not at work, Marcia enjoys cross-stitching and working with flowers. She and husband, Bobby, recently moved to Cedar Creek, an area located in East Fayetteville. Marcia has plans to start a garden.

When asked how she would best describe her life, she replied, "To others it may seem boring, but I basically enjoy the simple things."

"I would like to take this opportunity to thank all employees and management of SEHS for making me feel so special. I am proud to be a part of the team."

Congratulations again Marcia! -editor



More good times from Carowinds '91...

Here are more moments to remember from the annual SEHS family picnic at Carowinds on April 20, 1991. Numbers correspond with pictures...

1. The Bryan-Shanahan group pauses for a picture after the picnic at Crossroads Pavilion. They are (left to right): Kathy Shanahan, Chastity Seymour, Samantha Tolar, Jessica Jackson, Kali Bryan, Mike Bryan, and Sarah Bryan.
2. Come 'n get it! Southeastern employees and their families sit down to enjoy a cook-out with hot dogs, chips, cole slaw, popsicles, and lots more! Scooby-Doo made an appearance for the children.



3. David and Donna Vinson embark on yet another ride of Thunder Road, Carowinds' tallest and longest rollercoaster. Donna's brother, Brian McLaurin, came along for the ride. Hold on to your stomachs!
4. "If they can do it, so can we!" Debbie Allee, Sarah Bryan, and Sam Tolar (Patti's husband) prove that they've got just as much nerve as anyone else. However, Patti chickened out on this ride!

Photographer's Credits

Photo #1 taken by Jim Williams

Photos #2 and #4 taken by Donna Vinson

Photo #3 taken by Pam Greenhill



A Scrub Fashion Show...

Below: LaSonya Dickie (left) and Amy Furtado (right) get ready to show-off their scrub suits at the fashion show. Lots of different styles and colors were modeled.



Photo by Donna Vinson

On April 29th, the Southeastern breakroom was changed into the location of Southeastern's first scrub fashion show.

Fayetteville's newest nursing home, Village Green Care Center (VGCC), came to

Southeastern for help in coordinating their uniforms/scrubs. **Phyllis Page**, office textile coordinator, and **Debbie Allee**, micro systems administrator, played major roles in organizing the show.

The models were: **Garry Brookshire**, **LaSonya Dickie**, and **Amy Furtado** of SEHS, and **Pam Young**, **Marie Musselwhite**, and **Walter Dusenbury** of VGCC.

Phyllis had put together several combinations to show VGCC Administrator **Mack Brown**. SunBelt (SEHS line of scrub apparel) and Landau were the name brands of the scrubs modeled.

When all was said and done, the nursing staff chose white skirts/pants with white



Photo by Pam Greenhill

Above: Director of Nursing, Pam Young, models scrubs for VGCC Administrator Mack Brown.

blouses and teal cobbler aprons. The dietary staff chose raspberry skirts/pants with wine cobbler aprons. The maintenance staff chose aquamarine tops and pants.

In conclusion, suffice it to say that the scrub fashion show was a big success thanks to the employees and staff of SEHS and Village Green Care Center! **-editor**

Exhibits, Meetings, Golf...PINEHURST!

Hard work does pay off! Just ask **Sarah Bryan** (Customer Service Supervisor). For nearly a year, she made plans for Southeastern's 4th Annual Sales Meeting at Pinehurst Golf and Country Club.

Sarah organized room reservations, daily schedules, vendor exhibits, and lots more. She had a lot of help from Customer Service's **Stacy Bowen** and **Cindy Handley**

and Desktop Publisher, **Pam Greenhill**.

A group of over 200 consisting of SEHS Sales Representatives, Management, and various vendors were present for the 3 1/2-day event held May 5-8.

Each day, the vendor exhibits began at 7:30 a.m. Reps set up exhibits/demonstrations for small groups of 3 or 4 SEHS Salespeople. The groups then moved from

table to table to meet with each vendor. Salespeople learned about new products, healthcare trends, and services offered through the manufacturers.

On Monday, a 17-team golf tournament began. The 2-day event was won by the team of SEHS reps **Dickie Augustine**, **Bob Cook**, **Mike Winfree**, and Unipath Rep, **Lewis Bollinger**.

At Monday's dinner, SEHS supervisors joined the group in welcoming **Rocky Bleier** as the guest speaker. Rocky was picked in the 1968 NFL draft by the Pittsburgh Steelers. But before he could prove himself, he was sent to combat in Vietnam. He told the story of his 2-year battle to overcome the crippling injuries he received during combat. Rocky later enjoyed a 12-year career with the Steelers, helping to win four Superbowls!

Rocky's motivation to succeed despite the odds, inspired the group. He is living proof that you can do anything, if you put your mind to it!

Invitations to the 1992 Sales Meeting will be mailed in Fall of '91. **-editor**

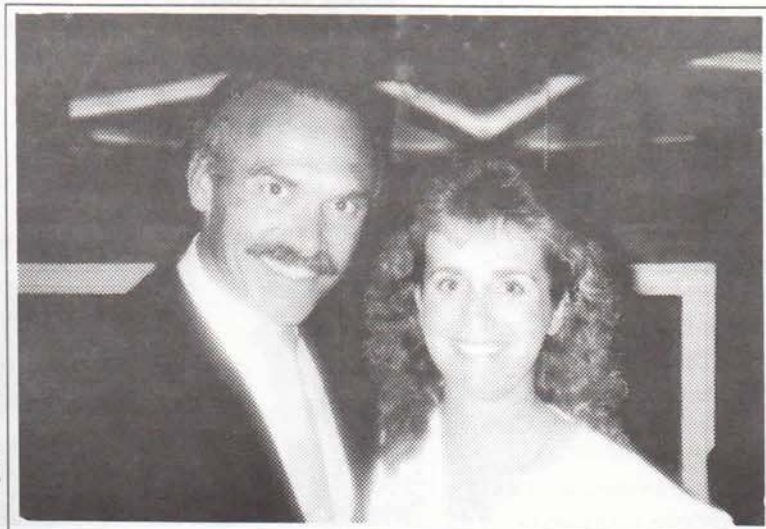


Photo by Jim Williams

Left: Sarah Bryan poses with guest speaker, Rocky Bleier at the 1991 sales meeting held in Pinehurst, NC. Rocky played for the NFL's Pittsburgh Steelers for 12 great years & helped them win four Super Bowls!

George Washington University

A private, non-profit health care and education center, The George Washington University Medical Center (GWUMC) is an institution committed to patient care, education and research. GWUMC is comprised of the George Washington University Health Plan, and the School of Medicine and Health Sciences.

The George Washington University Hospital opened its doors in 1844 at the former Washington Infirmary on 16th Street, NW and moved to its current location on Washington Circle in 1947. The Hospital is a 501-bed acute care facility with more than 16,000 admissions annually. More than 50,000 patients are treated at the Hospital's emergency department each year, making it one of the busiest in the city.

The professional staff of the Medical Center includes approximately 250 full-time faculty physicians and 1375 volunteer faculty physicians, specializing in the full range of medical and scientific disciplines, as well as highly-trained professionals in nursing, administration, medical technology, social work and other health care fields.

GWUMC has experienced noteworthy growth and development in research programs in recent years, with support for sponsored projects increasing to more than

\$20 million annually. The research program has advanced through the initiation of multi-disciplinary programs and the acquisition of major new equipment, specifically a gene synthesizer and a Loats image analyzer, a computer-driver system for analysis of two-dimensional images.

Fulfilling its combined mission of patient care, education and research, the Medical Center continually discovers new knowledge and perfects new treatment techniques that benefit people world wide.

To quote Michael M. Barch, Administrator: "In the years ahead, the George Washington University Medical Center faculty and staff look forward to new University leadership and growth. Several clinical programs have recently been established to assure greater service to our patients. These include bone marrow transplantation, experimental gallstone lithotripsy and the hyperbaric medicine program. In addition, a variety of renovation projects in the Hospital and clinical buildings will soon be complete to enhance the quality of the environment in which we serve patients. These are perhaps the most challenging times of our 150 year history. We will meet these challenges head on, with foresight and creativity."

Special Thanks to Mike Sposa and Terry Abdo and Ray Curley of GWUMC.

Len Care of Elizabethtown



Len Care of Elizabethtown was started in November of 1987 by Max and Mary Lennon. It is an 80-bed nursing home located on Hwy. 701 in Elizabethtown, NC. Len Care offers both convalescent and long-term care to its patients.

Southeastern began working with Len Care in January of 1989. Sales Rep, Cliff Christianson, initiated a reorganization of their stock room to allow for better inventory

control. Brenda Dillman, Business Office Manager, spoke highly of Southeastern, "In the past 2½ years, Cliff has consistently introduced us to new products and services that he feels would be of use to us. He has gone above and beyond the call of duty on several occasions." Len Care has helped Cliff get his foot in the door with other nursing home accounts.

Len Care has an MDS (minimum data sets) program to help them with level of care planning. They have SNF (skilled) and ICF (intermediate) levels of care.

Customer Service Representative, **Kathy Tucker**, says she thoroughly enjoys working with Director of Nursing, Rosa Britt, and all the others at Len Care.

Southeastern is proud to be a Len Care supplier! -editor

Special thanks to Cliff Christianson, Kathy Tucker, and Brenda Dillman (Len Care)

The Twilight Zone?

SEHS employees **Cindy Cronin** (Micro systems) and **Charlotte Kinser** (Accounts Receivable) were talking about their home towns one day, when they came upon the issue of schools.

Cindy mentioned that she graduated from Logan High School in Logan, West Virginia. Charlotte couldn't believe it! It turns out that she had graduated from the same school 15 years earlier!

-Contributed by Debbie Jones

Richmond employees go to Kings Dominion!

In the next issue, read about Richmond employees' family day at Kings Dominion!

Employee returns from the Gulf!

We are very happy to report that Southeastern's own "Desert Storm" veteran has finally returned home!

As reported previously, **Twana Sue Ammons** was deployed with the 805th Military Police reserve unit to the Gulf in September 1990. She served her country (and Southeastern) with pride until her return in May 1991.

Since her return, Twana Sue has gotten married to SFC Joseph Phillips, a United States Army recruiter stationed at Fort Bragg. She is back working in Fayetteville's Hospital Customer Service Division as an Order Entry Clerk.

When asked how about her return to American soil, she replied, "It's good to be home safe, and see my family again."

We are very proud of Twana Sue and everyone who served in Operation: Desert Storm. Welcome back! -editor

Below: Twana Sue (right) in Saudi Arabia with her friend, Harrella Whitehead



Close-Up... Customer Service Hospital Division

"Discover the customer's needs and meet those needs in an accurate and timely manner." Those are the words from **Sarah Bryan**, customer service supervisor, that best describe Southeastern's customer service divisions.

Each Customer Service Representative (CSR) has two or three salespeople that she represents. They work directly with these sales reps and the hospitals they sell to.

Customer Service does much more than just take orders from customers. They also write return goods authorizations (RGAs), organize quotes, solve shipping problems, sell some products,

keep salespeople up-to-date, and much more on a day-to-day basis. Basically customer service is just what the title implies...providing whatever service needed to SEHS customers.

Each CSR has her own computer terminal so as to have quick access to pertinent information. Due to



L to R: Patti Tolar, Janice Nettles, Sarah Bryan, Linda Penrose, Angela Grimes, Twana Sue Phillips

the large amount of time they spend on the phone, some of them wear headsets instead of holding a phone receiver.

Recently, SEHS installed a new phone system. One of the features Customer Service uses is Automatic Call Distribution (ACD). When a rep's line is busy, any calls she can't answer will automatically be redirected to another rep with an open line. SEHS has also added 2 toll-free numbers specifically for direct dialing into Customer Service (no need to go through an operator).

Each SEHS salesperson relies on his/her customer service rep a great deal. When asked what Customer Service means to him, Sales Rep., **Joey Sanders**, replied, "My CSR, **Linda Penrose**, is not

only my right arm, she is both arms! I've been told many times that a Sales Rep is only as good as their company and their Customer Service. Fortunately, I have been blessed with both."

Department Head, **Janice Nettles**, is an 18-year Southeastern veteran that represents salesmen Steve Broughton and Art Capps. The other ladies and their salespeople are: **Angela Grimes** (Pat Clingenpeel, Bob Cook, and Jim Royal), **Linda Penrose** (Henry Kauffelt, Joey Sanders, Jim Short, and Eric Thomas), **Patti Tolar** (Jim Burks, Ken Gupton, and Bob Hartley), and **Twana Sue Phillips** (order desk).

-Written by Pam Greenhill & Donna Vinson
Next Issue: Pricing/Contracts Dept.



Service Anniversaries

The following Southeastern employees are celebrating their service anniversaries in May and June of 1991. Southeastern thanks them for all their years of dedicated service and loyalty.

This is a continuing column.

MAY 1991	# OF YEARS
Edgar Allison	10
Kathy Shanahan	8
Edmund Buttram	7
Karon Lane	6
Mary Lloyd	6
Betty Koonce	3

Service Anniversaries maintained and submitted by Personnel Department

Karen Wilkinson	3
John Ward	2
William Morris	2
Kim Winters	2
Stephanie Jessup	2

JUNE 1991	# OF YEARS
Jim Royal	12
Wally Kinlaw	11
David Jackson	4
Joy Walker	3
Robert Shelton	3
Bland Haywood	3
Thomas Reeves	2
Faith Barnes	1

Something to think about...

Nothing in the world can take the place of persistence.

Talent will not; nothing is more common than unsuccessful men with talent. Genius will not; unrewarded genius is almost a proverb. Education will not; the world is full of educated derelicts.

Persistence and determination alone are omnipotent. *Author Unknown*
Submitted by Jeanie Driver

Life breaks everyone, but afterward, some are stronger in the broken places.
Ernest Hemingway

Submitted by Pamela Greenhill

new ARRIVALS

Tyler Racquel Hollis- Born to Melonee and Gene Hollis (Service Dept.) on May 17- 7 lbs. 5 oz.

Christopher Javon Dannelly- Born to Kim Jordan (Richmond Operator) on June 5- 9 lbs. 2 oz.

Tyler Daniel Sharr- Born to Michael and Debbie Sharr (Shipping Dept.) on June 11- 7 lbs. 10 oz.

Recent Weddings...

APRIL 4, 1991- Twana Sue Ammons (Fayetteville Customer Service) and Joseph Phillips. Joe is a U.S. Army Recruiter stationed at Ft. Bragg.

MAY 4, 1991- Joy Stephens (Accounts Payable) and Wes Walker. Wes is a paratrooper with the 82nd Airborne stationed at Ft. Bragg.

MAY 4, 1991- David Green (Fayetteville Warehouse) and Melinda Blackwell.

JUNE 21, 1991- Carla Godfrey (Fayetteville Customer Service) and Larry Smith. Larry is a 1st Sergeant in the US Army stationed at Ft. Bragg. **Pam Greenhill** (Desktop Publisher) was a bridesmaid. **Janice Nettles** (Hospital Customer Service) directed the wedding.

Corrections

Although every effort is made to print an error-free newsletter, there are times when mistakes are made.

In the last issue, we failed to recognize **Jim Short** in the "Service Anniversaries" column. In March of 1991, he celebrated his 14th year with SEHS!

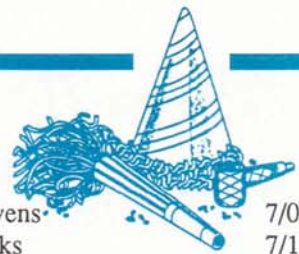
In the article about families in the Gulf, we reported that all of the family of SEHS employees had come home as of the end of April '91. However, Dale Helton (brother of **Sharon Banks**) did not leave Saudi Arabia until June of '91.

We apologize for any inconvenience these mistakes may have caused. -*editor*

"O.R. Manning, Sr. Memorial Fund" donations should be sent to:

Duke University Medical Center
in memory of O. R. Manning, Sr.
c/o Alan G. Herosian
DUMC Development Office
110 Swift Avenue
Durham, NC 27705

Happy Birthday!



May Birthdays

Lisa Hood	5/02
Thomas Reeves	5/05
John Ward	5/12
Joey Sanders	5/17
Clarence Gilliam	5/18
Ronnie Crosby	5/20
Lori Atchley	5/21
Albert Beck	5/24
Mrs. Eleanor Manning	5/27

June Birthdays

Rhonda Blankenship	6/03
Jim Royal	6/03
Kimberly Jordan	6/04
Daphne Manning	6/04
Debbie Allee	6/12
Jennifer Fort	6/14
Mike Sposa	6/14
David Jackson	6/17
Cyndy Ell	6/19
Patti Tolar	6/23
Linda Phillips	6/25
Deborah Rudisill	6/30
Glenna Herod	6/31

July Birthdays

Jessie Gibbs	7/01
Bill Maness	7/02
Angela Grimes	7/05
Donna Foster	7/06

Carmen Givens	7/09
Sharon Banks	7/10
Les Herod	7/12
Linda Arthur	7/15
Marsha West	7/17
Larry Harmon	7/20
Betty Koonce	7/21
Pam Greenhill	7/22
Marcia Tarrant	7/22
Virginia Kauffelt	7/25
Glen Carter	7/27
Glenn Barnett	7/29

August Birthdays

Brinda Williams	8/01
Cathy Banks	8/04
James Gray	8/04
Karen Wilkinson	8/07
Debra Pignatore	8/08
Lisa Weaver	8/09
Linda Faircloth	8/10
Russell Carr	8/11
Cindy Cronin	8/14
Angela Hicks	8/15
Joan Macaione	8/17
Joseph Forbes	8/18
Tracey Matthews	8/18
Scott Webster	8/22
Tony Webster	8/22
Mike Winfree	8/29
Jane Fort	8/31

HIDDEN HEROES...

Located in a small area in the Fayetteville warehouse, you can find 10 very hard-working ladies!

In the "99" section, open cases and individually sold items are kept. Hundreds of medical/personal items are stocked from bandages and syringes to sterile water and catheters. Many items are pre-labelled with bar-codes for packaging and shipping to Nursing Homes.

The ladies have a knowledge of the products as accuracy is required. Each employee works as part of a cycle that can go from applying bar-coded stickers to shipping the product to Southeastern customers.

Working together is important to the effectiveness of this group. Department Head, **Cheri Michaelson**, says, "We're all one team!" -*editor*

Next Newsletter: Order Entry



Ed Blackburn-	Physician Sales
LaSonya Dickie-	Southcare (TPB)
Charlotte Kinser-	Accounts Receivable
Floyd McMillan-	Home Care Technician
Teresa Spell-	Southcare (TPB)

New employees and birthday columns are submitted by the Personnel Department.

Desktop Publishing Department of Southeastern • PPG • June 1991

Help protect the world we live in, RECYCLE!

