

VITAL SIGNS

Southeastern's First Monthly Newsletter

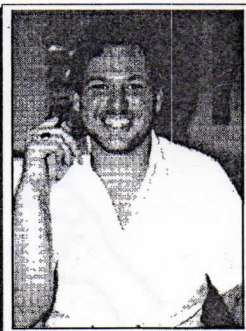
To: Everyone

October, 1988

As Southeastern's Desktop Publisher, I have been assigned a new responsibility: publishing and distributing a monthly newsletter. I think I will find this responsibility very challenging and a lot of fun. However, I doubt a Southeastern newsletter can be successful without input from you and other employees. What would you like to see published? I will be needing news items, photographs, etc., or anything you feel would be interesting and beneficial for Southeastern employees to read. My goal is to publish and distribute a newsletter every month on a timely basis. But without employee input, I do not feel the newsletter would be very interesting to read. Please submit any thoughts and ideas to your supervisor or to my supervisor, Joy Winslow. I would appreciate all submissions to be received by the *fifth* of every month.

Thank you,
Allison Severance-Henry

Good luck and best wishes to Wayne Bryson on his new position as our stores inventory control supervisor!



New Faces

There seem to be so many new faces here at Southeastern, a monthly "New Faces" column would help introduce new employees to us. Supervisors, please submit the names of any new employees you would like to see published in the "New Faces" column.



Here is a phone message form some of you might like to see:

WHILE YOU WERE OUT IN A MEETING

Name: _____

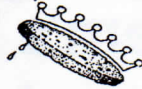
Check one:

- ☐ Telephoned.
- ☐ Did not telephone.
- ☐ Thought about telephoning, but then changed his or her mind.
- ☐ Telephoned, but could not for the life of him or her remember why.
- ☐ Telephoned, then hung right up, but I am certain it was him or her.
- ☐ Wants you to call and attempt to leave a message for him or her.
- ☐ Ate paste as a child.

LES' MESS

For those of you considering opening your own fast food restaurant, consider the following concept by Dave Barry, author of "Claw Your Way To The Top".

The "Mister Mediocre" Fast-Food Restaurant Franchise



"The basic menu item, in fact the only menu item, would be a food unit called the "patty", consisting of - this would be guaranteed in writing - "100% animal matter of some kind". All patties would be heated up and then cooled back down in electronic devices immediately before serving. The Breakfast Patty would be a patty on a bun with lettuce, tomato, onion, egg, Ba-Ko-Bits, Cheez Whiz, a Special Sauce made by pouring ketchup out of a bottle, and a little slip of paper stating: "Inspected by Number 12". The Lunch or Dinner Patty would be any Breakfast Patties that did not get sold in the morning. The Seafood Lover's Patty would be any patties that were starting to emit a serious aroma. Patties that were too rank even to be Seafood Lover's Patties would be compressed into wads and sold as "Nuggets". Any nuggets that had not been sold as of the end of the month would be used to make bricks for new Mister Mediocre restaurants."

Notes from our Purchasing Department

Purchasing will be giving a bridal shower for Stacey Willis on Thursday, October 13 at five o'clock in the breakroom.



"Now, where did that warehouse go?"

DID YOU KNOW. . . .

Southeastern Hospital Supply was incorporated by Mr. Manning, Sr. in January of 1948?

Southeastern currently employs a total of 160 people?

Southeastern Hospital Supply services North and South Carolina, Virginia, Washington, D.C. and suburban Maryland?

Southeastern services hospitals (military and V.A. included), physicians, clinics, nursing homes, surgicenters, industrial accounts, and home healthcare operations?

Southeastern employs an estimated 45 salespeople?

Southeastern's Home Health Care facility is a stand alone operation servicing Cumberland, Robeson, Hoke and Harnett Counties?

Southeastern's Fayetteville office has over 100,000 square feet of warehouse space and an additional 20,000 square feet of office space?

Southeastern owns an additional 40,000 square feet of office and warehouse space in Richmond, Virginia?

Did you know. . . continued

Southeastern's programming staff is responsible for writing an estimated 80% of all of the computer programs currently in use?

Southeastern's Richmond and Fayetteville branches support an extensive, company owned truck fleet, including seven eighteen wheeler tractor-trailer units?

Southeastern delivers over 80% of their total sales?

Southeastern is the largest distributor of medical equipment and supplies headquartered in the Carolinas, and the largest privately owned distributor of medical supplies and equipment in the Southeastern United States?

